



est. 1987  
**MagnoliaHOMES**

SHEPHERDS CREEK

# The Franklin

HOME SITE 65



*Shepherd's Creek*

HOME SITE 65

660 BUSHWILLOW LANE  
COLLIERVILLE, TN 38017

HEATED SQ. FT. 5150-5350

5 BEDROOMS (2 DOWN)  
5 FULL BATHROOMS  
HALF BATHROOM DOWN  
OVERSIZED 3 CAR GARAGE  
PLAYROOM & MEDIA ROOM UPSTAIRS  
SCULLERY OFF KITCHEN  
OFFICE UPSTAIRS & DOWNSTAIRS  
COVERED OUTDOOR LIVING AREA  
WITH GRILLING PORCH  
SLIDING DOORS FROM FAMILY ROOM  
TO OUTDOOR LIVING ROOM

### *Included:*

- JAMES HARDIE® (NO ROT) SIDING WITH A 30 YR. MANUFACTURER LIMITED WARRANTY, EXTERIOR TRIM HAS A 15 YR. LIMITED WARRANTY; PER PLAN. SIDING SEEN FROM THE STREET WITH MITERED CORNERS
- JELD-WEN® WINDOWS ARE LOW-MAINTENANCE EXTRUDED ALUMINUM-CLAD FRAMED WINDOWS = NO MORE PAINTING! LOW-E ADVANCED GLASS & ARGON GAS IN ALL WINDOWS. SDL WINDOWS ON ALL WINDOWS OF HOME.
- AMANA® EQUIPMENT USED FOR HVAC, LTD. LIFETIME WARRANTY ON COMPRESSOR AND HEAT EXCHANGE WITH 10 YR. PARTS FOR THE ORIGINAL HOMEOWNER.
- 10 YEAR LIMITED WARRANTY BY QUALITY BUILDERS WARRANTY CORPORATION; BACKED BY LIBERTY MUTUAL®
- HOME SITUATED ACROSS FROM BEAUTIFUL POND WITH FOUNTAINS
- SIZABLE SCULLERY SPACE WITH SINK, SECOND DISHWASHER, & SPACE FOR ADDITIONAL APPLIANCES
- REAR COVERED OUTDOOR LIVING AREA WITH GRILLING TERRACE AND WOOD-BURNING FIREPLACE
- MEDIA ROOM WITH DIVIDER WALL FOR TELEVISION CORDS
- BUILT-INS ON SIDE OF FIREPLACE IN FAMILY ROOM; LIMESTONE MANTLE ON FIREPLACE
- SHOWER IN LIEU OF TUB IN BATHROOM 2 DOWN
- WALK IN PANTRY OFF OF KITCHEN
- FRIEND'S ENTRY ON SIDE OF HOME

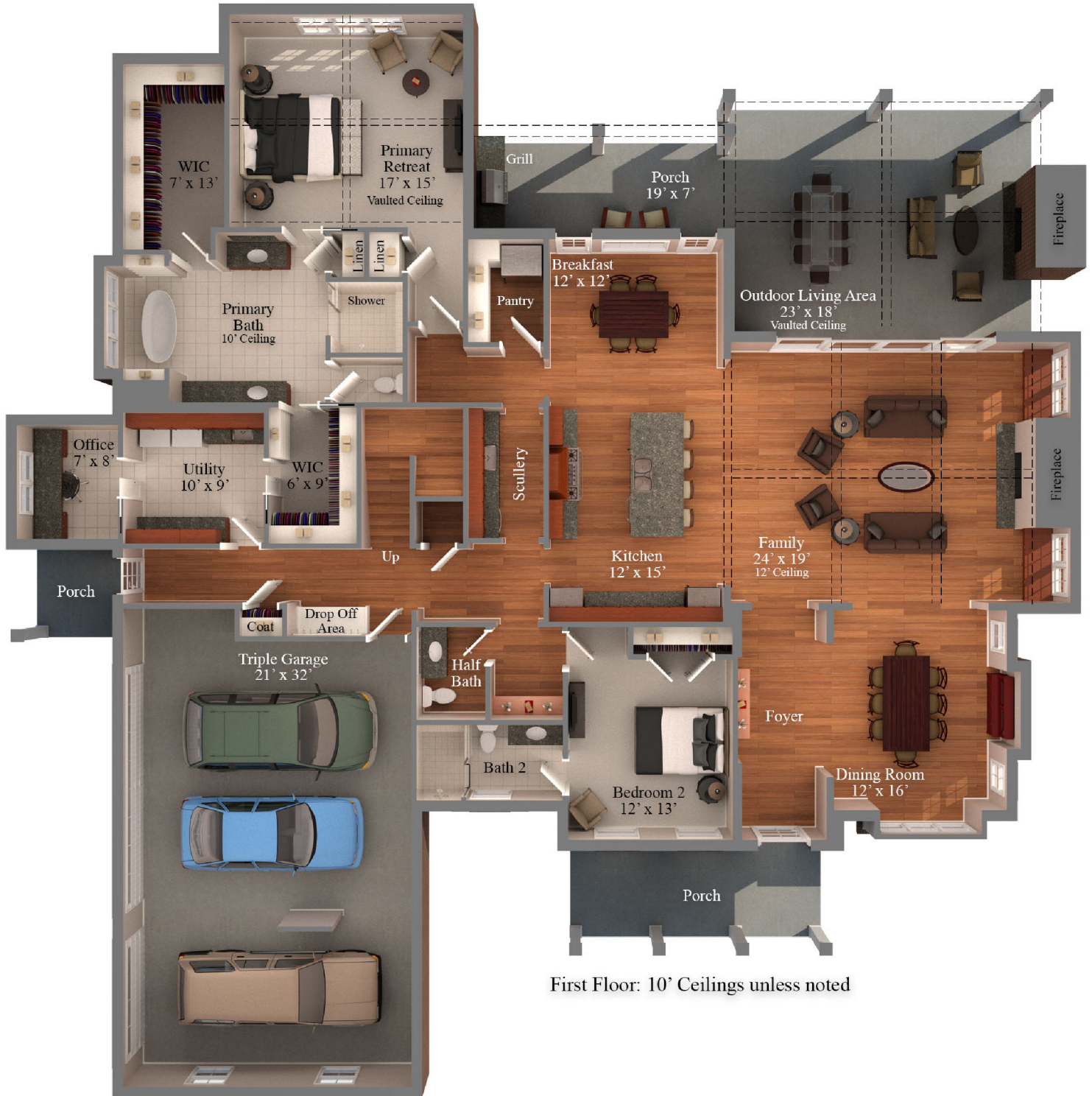


est. 1987  
**MagnoliaHOMES**

SHEPHERDS CREEK

# The Franklin

HOME SITE 65



First Floor: 10' Ceilings unless noted

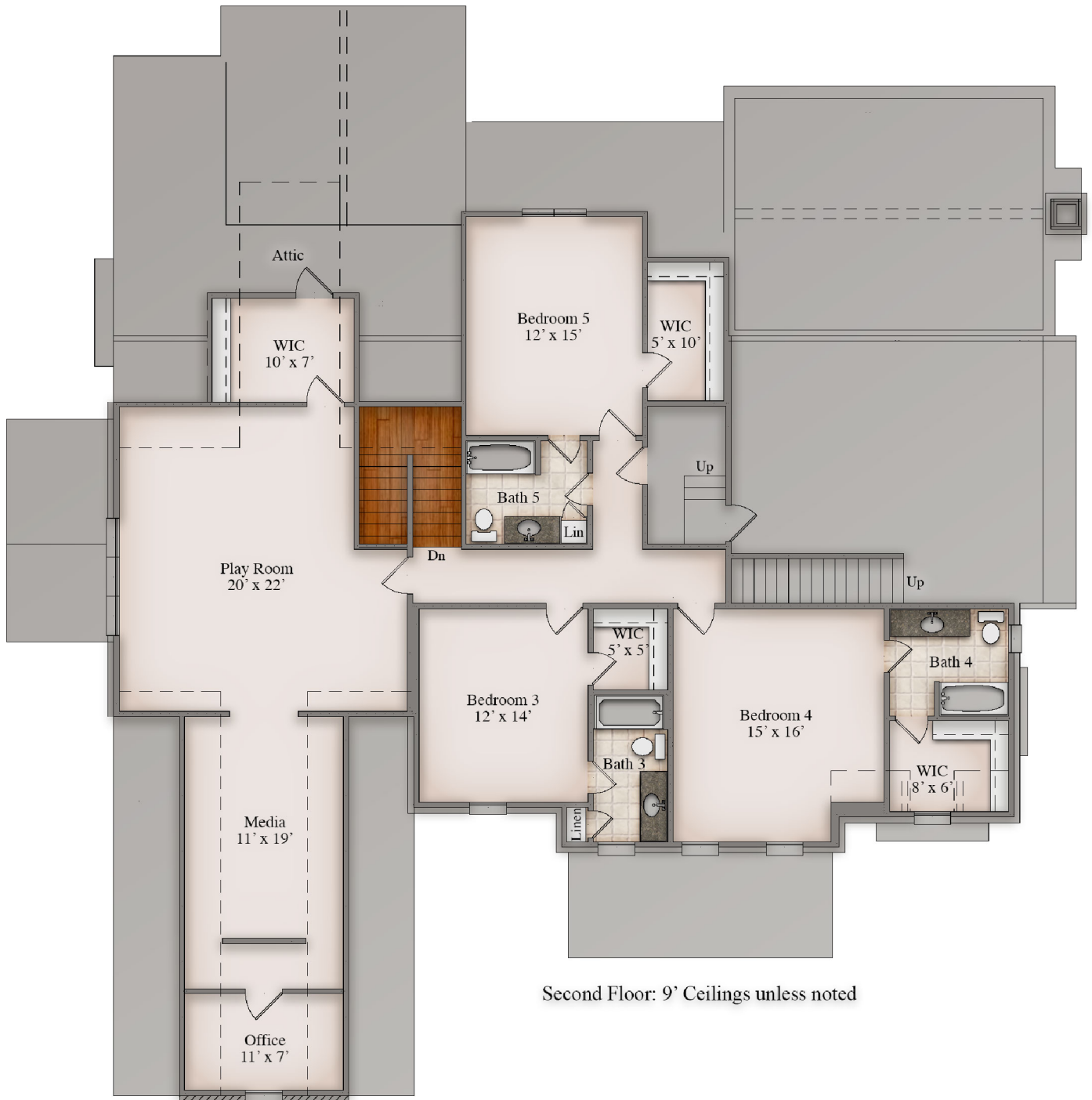


est. 1987  
**MagnoliaHOMES**

SHEPHERDS CREEK

# The Franklin

HOME SITE 65



Second Floor: 9' Ceilings unless noted



est. 1987  
**MagnoliaHOMES**

**SHEPHERDS CREEK**

# The Franklin

## HOME SITE 65

