



est. 1987
MagnoliaHOMES

CYPRESS GROVE

The Stonebridge

HOME SITE 279



Cypress Grove

HOME SITE 279

719 WINDSOR HILL CIRCLE WEST
COLLIERVILLE, TN 38017

HEATED SQ. FT. 3966-4166
SQ. FT. UNDER ROOF 4936-5136

5 BEDROOMS
2 BEDROOMS DOWN
4 FULL BATHROOMS
HALF BATH DOWN
GAME ROOM UPSTAIRS
2 STORY VAULTED FAMILY ROOM
LARGE COVERED REAR PORCH
SIZABLE 3 CAR GARAGE
OFFICE/PRAYER ROOM DOWN
FRIEND'S ENTRY ON SIDE OF HOME
10' CEILINGS DOWN + 9' CEILINGS UP
UNLESS NOTED

Included:

- JAMES HARDIE® (NO ROT) SIDING WITH A 30 YR. MANUFACTURER LIMITED WARRANTY, EXTERIOR TRIM HAS A 15 YR. LIMITED WARRANTY; PER PLAN. SIDING SEEN FROM THE STREET WITH MITERED CORNERS
- JELD-WEN® WINDOWS ARE LOW-MAINTENANCE BRICKMOULD VINYL FRAMED WINDOWS! NO MORE PAINTING! LOW-E ADVANCED GLASS & ARGON GAS IN ALL WINDOWS. GBG WINDOWS ON FRONT OF HOME & WINDOWS FACING STREET.
- AMANA® EQUIPMENT USED FOR HVAC, LTD. LIFETIME WARRANTY ON COMPRESSOR AND HEAT EXCHANGE WITH 10 YR. PARTS FOR THE ORIGINAL HOMEOWNER.
- 10 YEAR LIMITED WARRANTY BY QUALITY BUILDERS WARRANTY CORPORATION; BACKED BY LIBERTY MUTUAL®
- BRICK FIREPLACE IN FAMILY ROOM, ENLARGED TO 42" WITH CEDAR MANTEL
- BUILT-INS ON BOTH SIDES OF FIREPLACE WITH BASE CABINETS & CEDAR FLOATING SHELVES
- CUSTOM BUILT VENT HOOD IN KITCHEN
- DOUBLE CONVECTION OVENS IN KITCHEN WITH STACKED MICROWAVE
- APRON FRONT WHITE FARM SINK IN KITCHEN
- SIZABLE FREE STANDING TUB IN PRIMARY BATH
- CROWN MOLDING & SMOOTH CEILINGS THROUGHOUT THE DOWNSTAIRS & UPSTAIRS
- ELEVATED TRIM WORK THROUGHOUT HOME, INCLUDING BEHIND TUB IN PRIMARY BATHROOM
- SHAMPOO BOXES INCLUDED IN ALL PRIMARY & SECONDARY SHOWERS

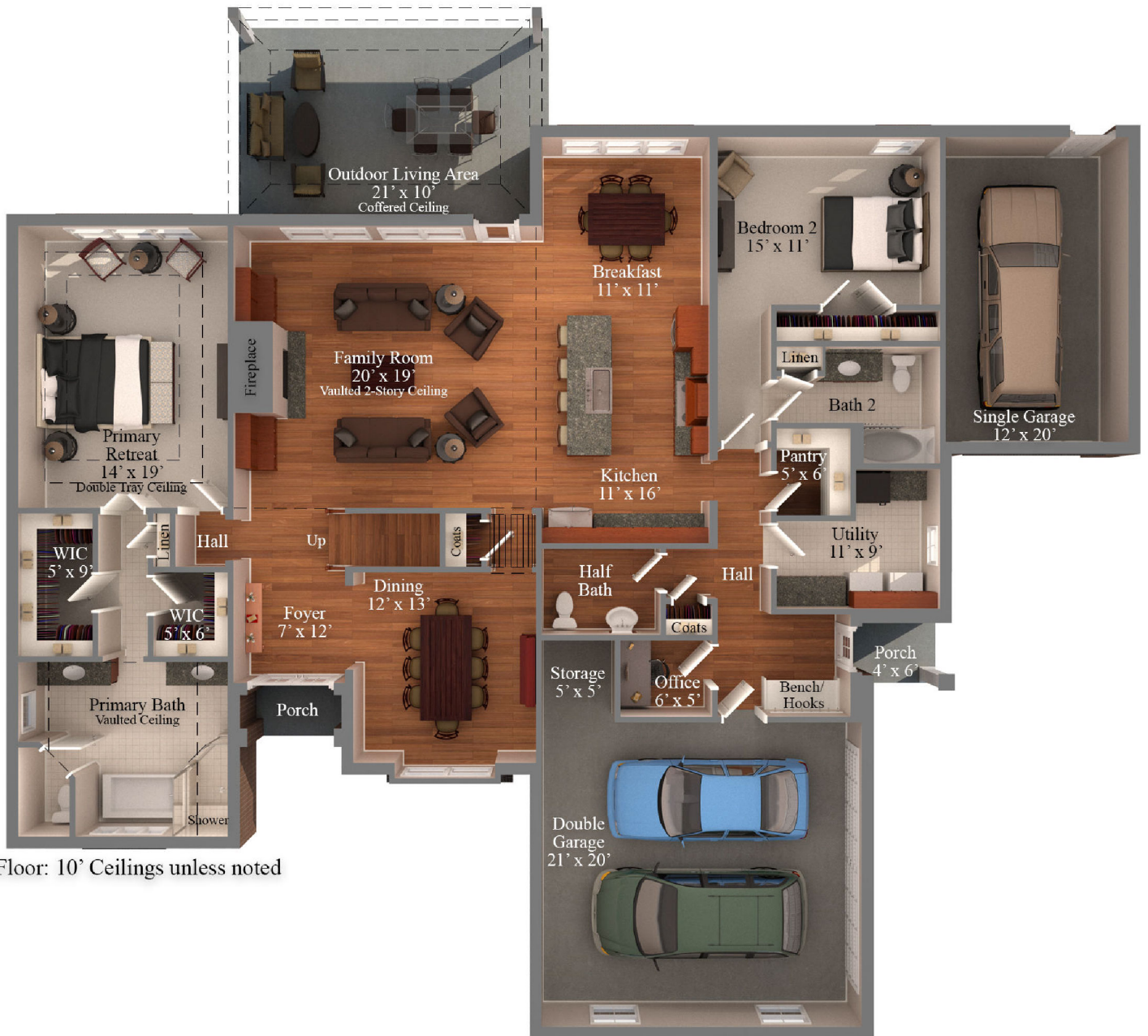


est. 1987
MagnoliaHOMES

CYPRESS GROVE

The Stonebridge

HOME SITE 279



First Floor: 10' Ceilings unless noted



est. 1987
MagnoliaHOMES

CYPRESS GROVE

The Stonebridge

HOME SITE 279



Second Floor:
9' Ceiling unless noted