



est. 1987
MagnoliaHOMES

VILLAGES OF SAUNDERS CREEK

The Cypress Farmhouse

BASE PLAN



Elevation A

Villages of Saunders

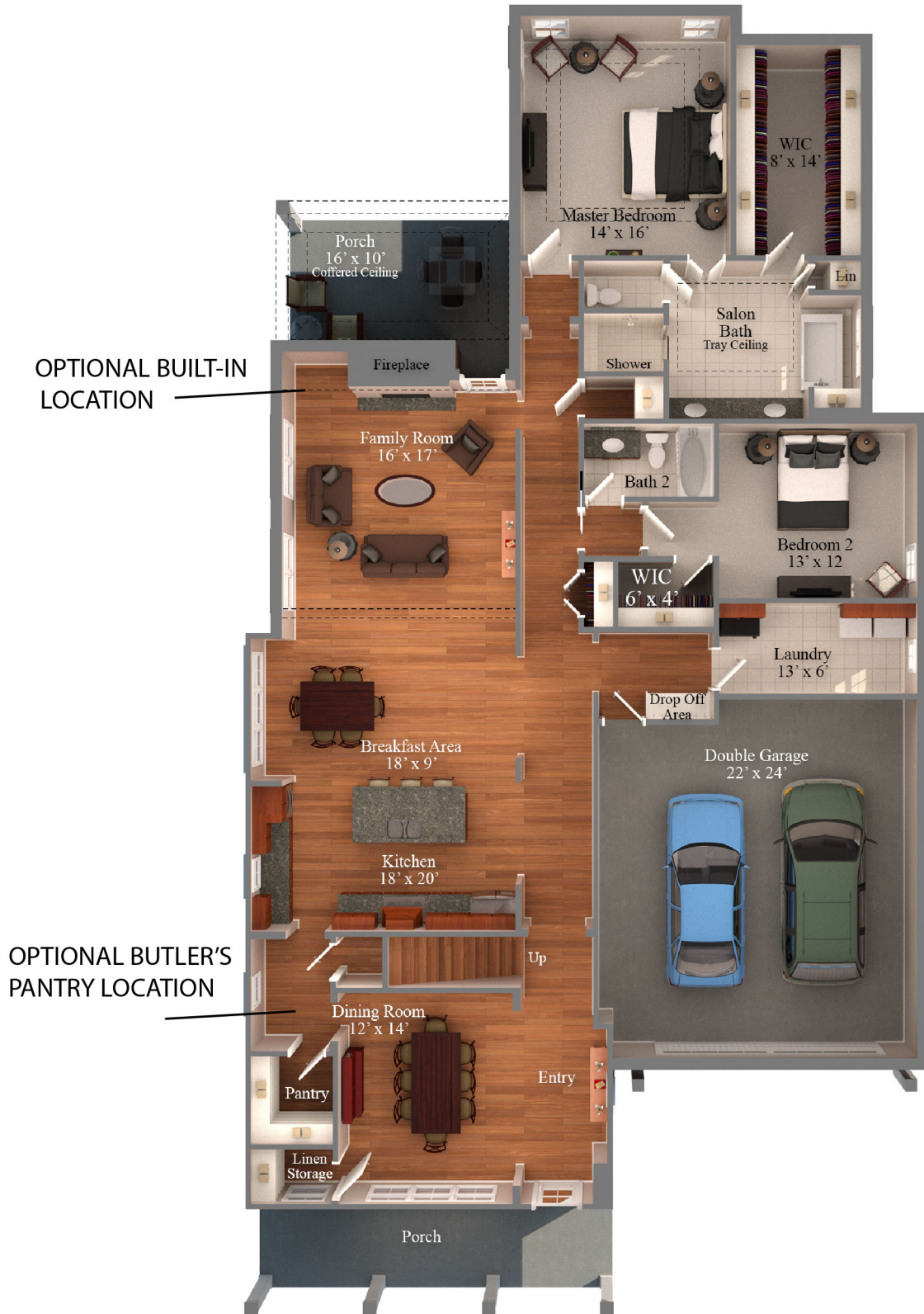
Included:

HEATED SQ. FT. 3312-3906
SQ. FT. UNDER ROOF 4214-5058

VAULTED CEILING IN FAMILY ROOM
3 BEDROOMS INCLUDED
2 BEDROOMS DOWN
3 FULL BATHROOMS
FUTURE 4TH BEDROOM UP
GAME ROOM UPSTAIRS
LARGE OVERSIZED GARAGES
LARGE COVERED REAR PORCH

Included:

- 10 YEAR LIMITED WARRANTY BY QUALITY BUILDERS WARRANTY CORPORATION; BACKED BY LIBERTY MUTUAL®
- JAMES HARDIE® (NO ROT) SIDING WITH A 30 YR. MANUFACTURER LIMITED WARRANTY, EXTERIOR TRIM HAS A 15 YR. LIMITED WARRANTY; PER PLAN.
- JELD-WEN® WINDOWS ARE LOW-MAINTENANCE BRICKMOULD VINYL FRAMED WINDOWS. LOW-E ADVANCED GLASS & ARGON GAS IN ALL WINDOWS. GBG WINDOWS ON ALL WINDOWS ON HOME, INCLUDING SIDES AND REAR OF HOME.
- AMANA® EQUIPMENT USED FOR HVAC, LTD. LIFETIME WARRANTY ON COMPRESSOR AND HEAT EXCHANGE WITH 10 YR. PARTS FOR THE ORIGINAL HOMEOWNER.
- TYVEK® HOUSE WRAP WITH 10 YR. LIMITED WARRANTY



First Floor: 9' Ceilings unless noted

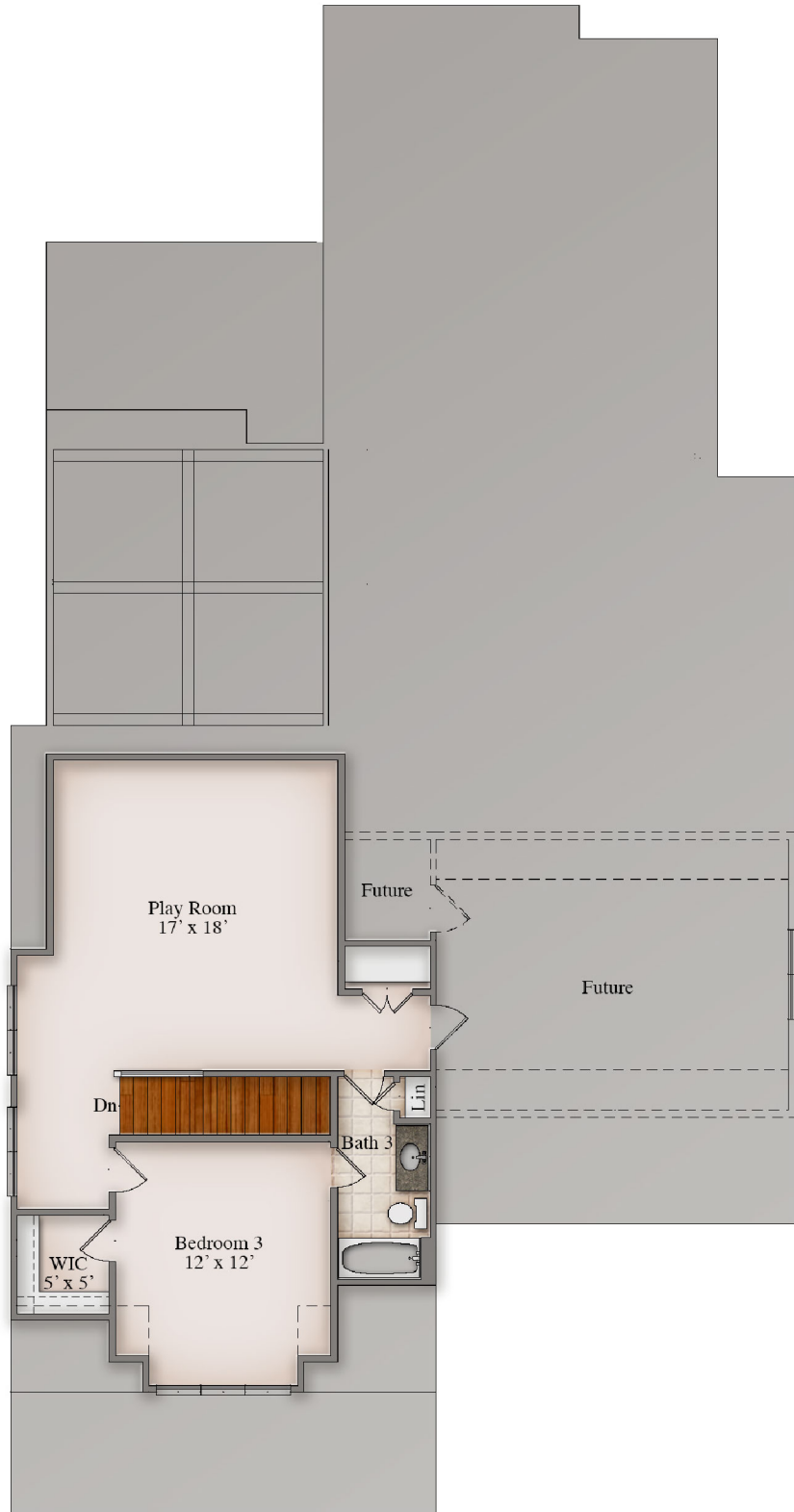


est. 1987
MagnoliaHOMES

VILLAGES OF SAUNDERS CREEK

The Cypress Farmhouse

BASE PLAN



Second Floor