



est. 1987  
**MagnoliaHOMES**

SHEPHERDS CREEK

# The Chateau St. Michelle

HOME SITE 75



*Shepherd's Creek*

HOME SITE 75

623 BUSHCHAT LANE  
COLLIERVILLE, TN 38017

HEATED SQ. FT. 6115-6315

5 BEDROOMS (2 DOWN)  
5 FULL BATHROOMS  
1 HALF BATHROOM UP  
1 HALF BATHROOM DOWN  
LARGE PLAYROOM WITH SEPARATE  
LARGE MEDIA/EXERCISE ROOM  
SCULLERY OFF KITCHEN  
4 CAR GARAGE (OVERSIZED)  
OUTDOOR KITCHEN  
HOME OFFICE DOWNSTAIRS  
SIZABLE HOME OFFICE UPSTAIRS  
FRIEND'S ENTRY

### *Included:*

- JAMES HARDIE® (NO ROT) SIDING WITH A 30 YR. MANUFACTURER LIMITED WARRANTY, EXTERIOR TRIM HAS A 15 YR. LIMITED WARRANTY; PER PLAN. SIDING SEEN FROM THE STREET WITH MITERED CORNERS
- JELD-WEN® WINDOWS ARE LOW-MAINTENANCE EXTRUDED ALUMINUM-CLAD FRAMED WINDOWS = NO MORE PAINTING! LOW-E ADVANCED GLASS & ARGON GAS IN ALL WINDOWS. SDL WINDOWS ON FRONT OF HOME & WINDOWS FACING STREET.
- AMANA® EQUIPMENT USED FOR HVAC, LTD. LIFETIME WARRANTY ON COMPRESSOR AND HEAT EXCHANGE WITH 10 YR. PARTS FOR THE ORIGINAL HOMEOWNER.
- 10 YEAR LIMITED WARRANTY BY QUALITY BUILDERS WARRANTY CORPORATION; BACKED BY LIBERTY MUTUAL®
- SIZABLE REAR COVERED OUTDOOR LIVING AREA AND PATIO WITH OUTDOOR VENTLESS FIREPLACE
- SIZABLE PRIMARY CLOSET WITH ISLAND IN THE CENTER
- OVERSIZED CUSTOM VENT HOOD IN KITCHEN WITH 20' CEILINGS
- 10' & 12' CEILINGS ON FIRST FLOOR, 10' CEILINGS UPSTAIRS UNLESS NOTED DIFFERENTLY
- OUTDOOR FIREPLACE & OUTDOOR KITCHEN
- BEAUTIFUL TRIM WORK THROUGHOUT INTERIOR OF HOME
- A-VAULTED CEILING IN KITCHEN AND BREAKFAST ROOM
- SOLID HAND-HEWN BEAMS IN KITCHEN, BREAKFAST ROOM, AND FAMILY ROOM



First Floor: 10' Ceilings unless noted

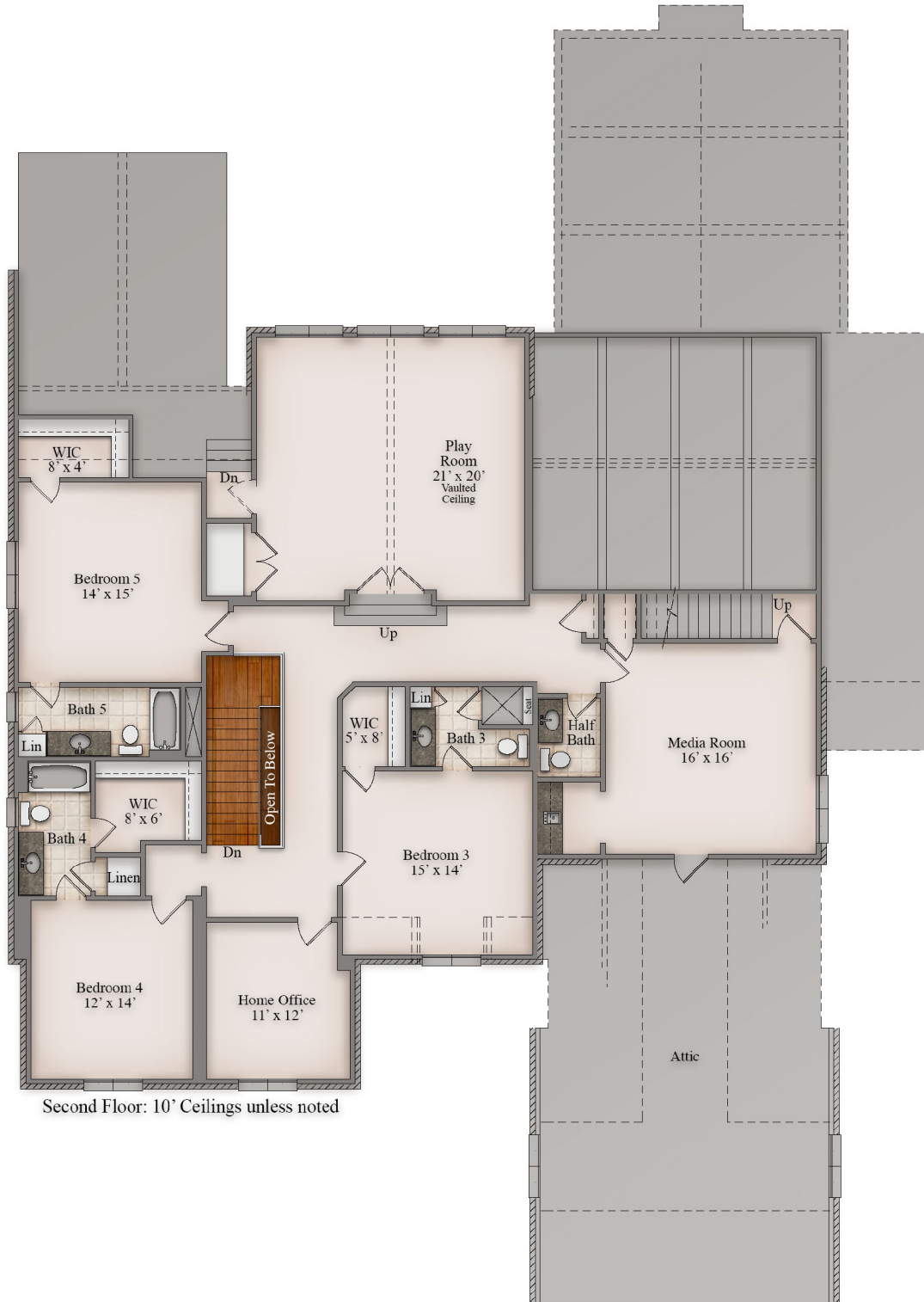


est. 1987  
**MagnoliaHOMES**

SHEPHERDS CREEK

# The Chateau St. Michelle

HOME SITE 75



Second Floor: 10' Ceilings unless noted