



est. 1987
MagnoliaHOMES

THE COVE AT CYPRESS

The Magnolia Cottage

BASE PLAN



Elevation A



Elevation B



Elevation C



The Cove at Cypress

Included:

HEATED SQ. FT. 3430-3630
SQ. FT. UNDER ROOF 4258-4458

- 9' CEILING IN FAMILY ROOM*
- 3 BEDROOMS INCLUDED
- ALL BEDROOMS DOWN
- 3 FULL BATHROOMS
- FUTURE 4TH BEDROOM UPSTAIRS
- FUTURE 4TH BATHROOM UPSTAIRS
- GAME ROOM UPSTAIRS
- LARGE DOUBLE GARAGE
- LARGE COVERED REAR PORCH

Included:

- JAMES HARDIE® (NO ROT) SIDING WITH A 30 YR. MANUFACTURER LIMITED WARRANTY, EXTERIOR TRIM HAS A 15 YR. LIMITED WARRANTY; PER PLAN.
- PELLA® WINDOWS ARE LOW-MAINTENANCE VINYL FRAMED WINDOWS = NO MORE PAINTING. LOW-E ADVANCED GLASS & ARGON GAS IN ALL WINDOWS. SDL WINDOWS ON FRONT OF HOME & WINDOWS FACING STREET.
- AMANA® EQUIPMENT USED FOR HVAC, LTD. LIFETIME WARRANTY ON COMPRESSOR AND HEAT EXCHANGE WITH 10 YR. PARTS FOR THE ORIGINAL HOMEOWNER.
- 10 YEAR LIMITED WARRANTY BY QUALITY BUILDERS WARRANTY CORPORATION; BACKED BY LIBERTY MUTUAL®



est. 1987
MagnoliaHOMES

THE COVE AT CYPRESS

The Magnolia Cottage

BASE PLAN



First Floor: 9' Ceilings unless noted

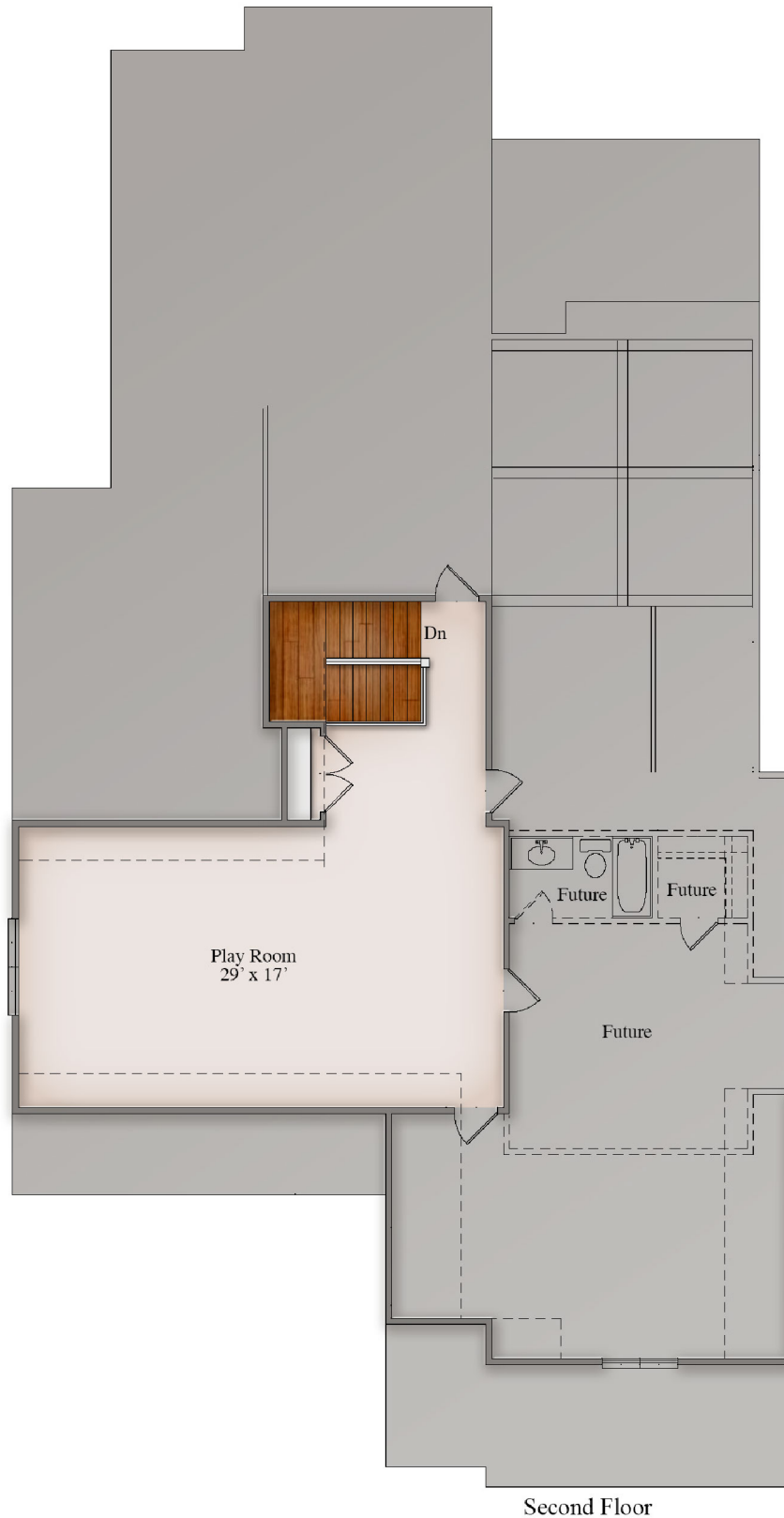


est. 1987
MagnoliaHOMES

THE COVE AT CYPRESS

The Magnolia Cottage

BASE PLAN



elevation B