



est. 1987  
**MagnoliaHOMES**

THE COVE AT CYPRESS

# The Cypress Farmhouse

BASE PLAN



Elevation A



Elevation B



Elevation C



*The Cove at Cypress*

*Included:*

HEATED SQ. FT. 3312-3512  
SQ. FT. UNDER ROOF 4214-441

9' CEILING IN FAMILY ROOM\*  
3 BEDROOMS INCLUDED  
2 BEDROOMS DOWN  
3 FULL BATHROOMS  
FUTURE 4TH BEDROOM UP  
GAME ROOM UPSTAIRS  
LARGE DOUBLE GARAGE  
LARGE COVERED REAR PORCH  
CUSTOM BENCH & HOOKS

*Included:*

- JAMES HARDIE® (NO ROT) SIDING WITH A 30 YR. MANUFACTURER LIMITED WARRANTY, EXTERIOR TRIM HAS A 15 YR. LIMITED WARRANTY; PER PLAN.
- PELLA® WINDOWS ARE LOW-MAINTENANCE VINYL FRAMED WINDOWS = NO MORE PAINTING. LOW-E ADVANCED GLASS & ARGON GAS IN ALL WINDOWS. SDL WINDOWS ON FRONT OF HOME & WINDOWS FACING STREET.
- AMANA® EQUIPMENT USED FOR HVAC, LTD. LIFETIME WARRANTY ON COMPRESSOR AND HEAT EXCHANGE WITH 10 YR. PARTS FOR THE ORIGINAL HOMEOWNER.
- 10 YEAR LIMITED WARRANTY BY QUALITY BUILDERS WARRANTY CORPORATION; BACKED BY LIBERTY MUTUAL®





est. 1987  
**MagnoliaHOMES**

THE COVE AT CYPRESS

# The Cypress Farmhouse

BASE PLAN



First Floor: 9' Ceilings unless noted

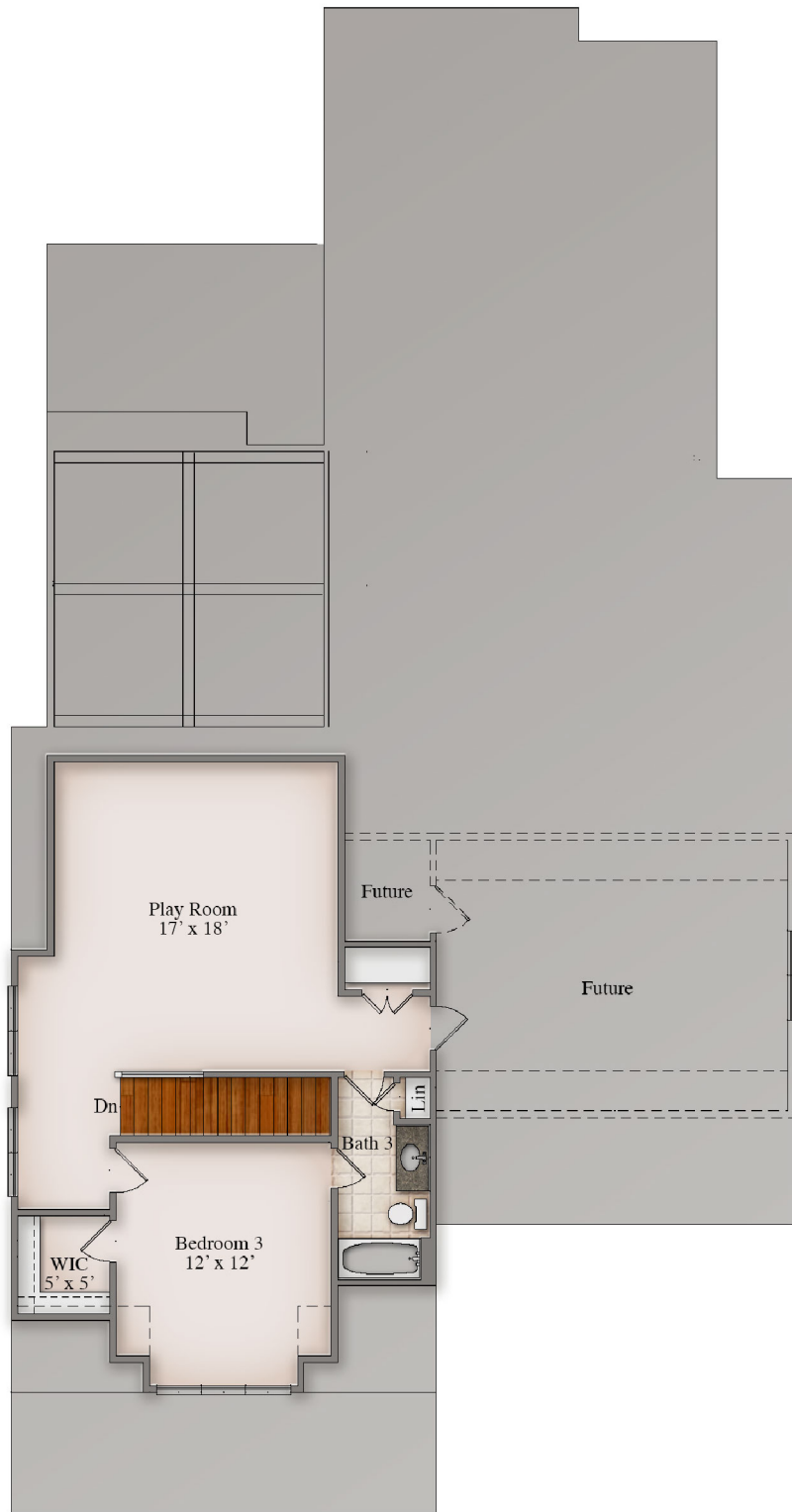


est. 1987  
**MagnoliaHOMES**

THE COVE AT CYPRESS

# The Cypress Farmhouse

BASE PLAN



Second Floor