



est. 1987
MagnoliaHOMES

VILLAGES OF SAUNDERS CREEK

The Dawson plan



ELEVATION A



ELEVATION B



Villages of Saunders

HEATED SQ. FT. 3231-3696
SQ. FT. UNDER ROOF 3940-4603

9' CEILINGS DOWNSTAIRS*
4 BEDROOMS INCLUDED
2 BEDROOMS DOWN
3 FULL BATHROOMS
BREAKFAST ROOM
GAME ROOM UPSTAIRS
LOFT AREA UPSTAIRS
DOUBLE GARAGE
COVERED PORCH ON REAR OF HOME

Available options to add:

- HALF BATH OPTION 7 PRIVATE BEDROOM 2 DOWNSTAIRS
- OPTIONAL THIRD CAR GARAGE; INCLUDING AREA ABOVE TO BE FINISHED
- DOUBLE CLOSETS IN MASTER BATHROOM OPTION
- OPTIONAL EXPANDED UTILITY ROOM, BEDROOM #2, AND DINING ROOM
- OPTIONAL STORAGE OFF OF KITCHEN

Included:

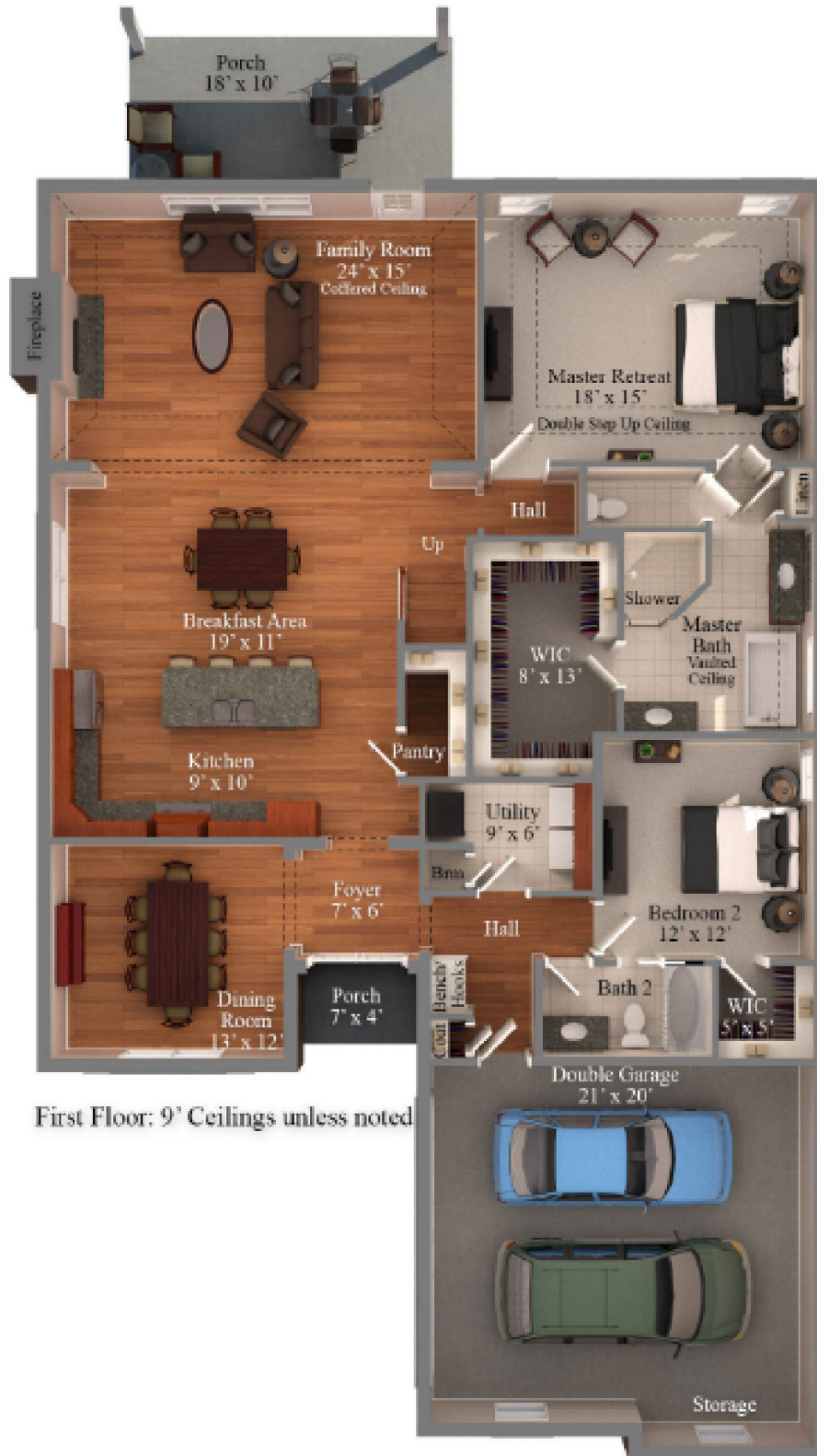
- JAMES HARDIE® (NO ROT) SIDING WITH A 30 YR. MANUFACTURER LIMITED WARRANTY, EXTERIOR TRIM HAS A 15 YR. LIMITED WARRANTY; PER PLAN.
- PELLA® WINDOWS ARE LOW-MAINTENANCE VINYL FRAMED WINDOWS = NO MORE PAINTING. LOW-E ADVANCED GLASS & ARGON GAS IN ALL WINDOWS. SDL WINDOWS ON FRONT OF HOME & WINDOWS FACING STREET.
- AMANA® EQUIPMENT USED FOR HVAC, LTD. LIFETIME WARRANTY ON COMPRESSOR AND HEAT EXCHANGE WITH 10 YR. PARTS FOR THE ORIGINAL HOMEOWNER.



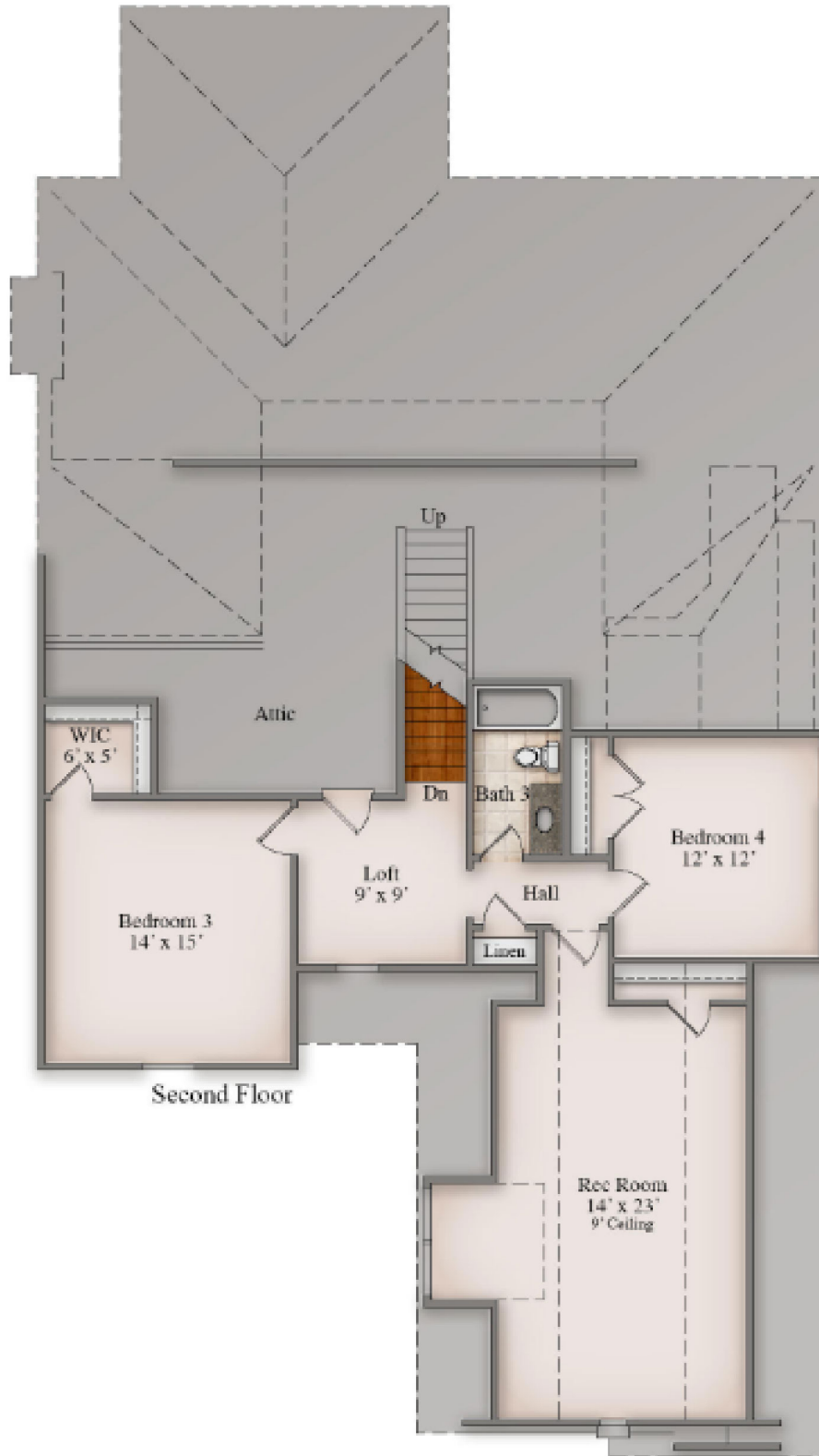
est. 1987
MagnoliaHOMES

VILLAGES OF SAUNDERS CREEK

The Dawson plan



First Floor: 9' Ceilings unless noted

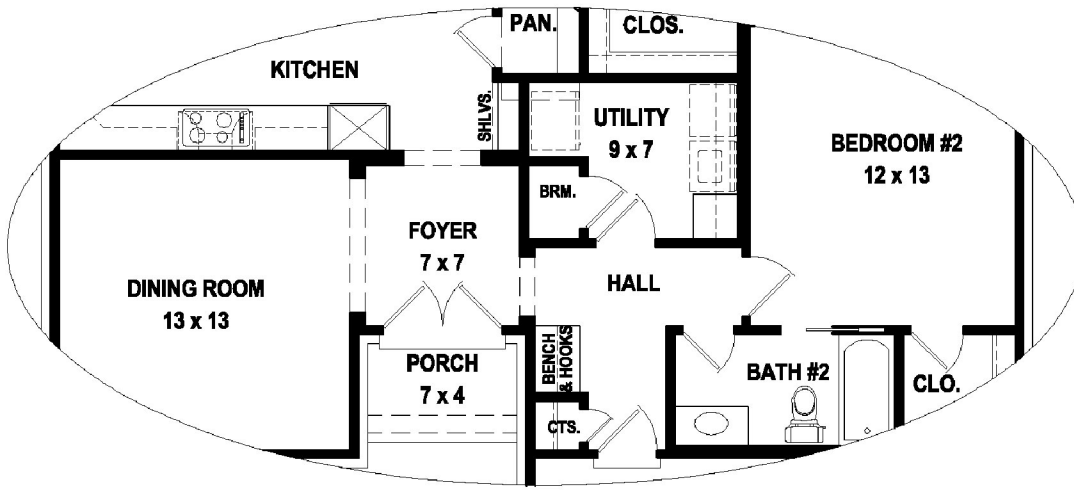




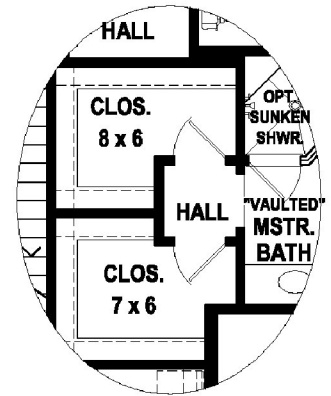
est. 1987
MagnoliaHOMES

VILLAGES OF SAUNDERS CREEK

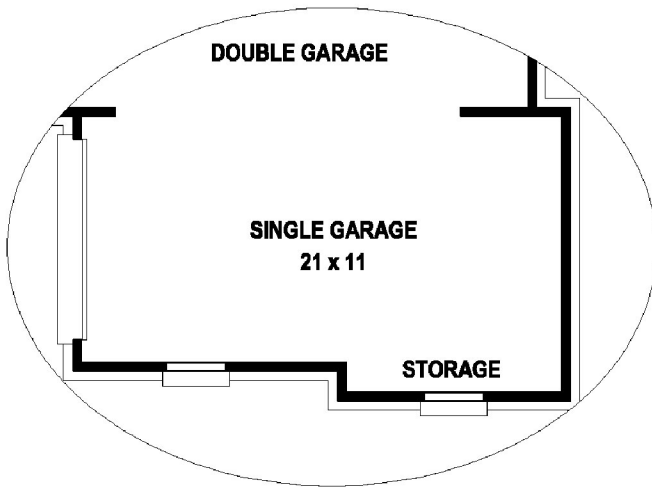
The Dawson plan



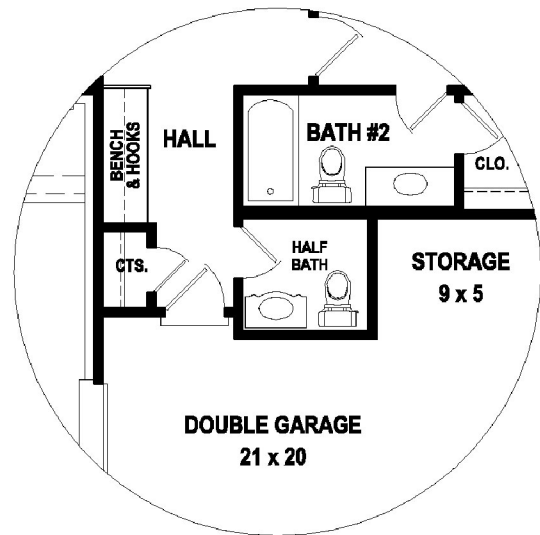
**"OPTIONAL"
EXPANDED UTILITY, BEDROOM #2
& DINING ROOM**



**"OPTIONAL"
DOUBLE CLOSETS IN
MASTER BATH**



**"OPTIONAL"
TRIPLE GARAGE**



**"OPTIONAL"
HALF BATH &
PRIVATE BEDROOM #2**