



est. 1987  
**Magnolia**HOMES

VILLAGES OF SAUNDERS CREEK

# The Chateau Chablis plan



ELEVATION A



ELEVATION B



*Villages of Saunders*

HEATED SQ. FT. 3281-3789  
SQ. FT. UNDER ROOF 4003-4711

10' CEILING IN FAMILY ROOM\*  
4 BEDROOMS INCLUDED  
2 BEDROOMS DOWN  
3 FULL BATHROOMS  
LOFT AREA UPSTAIRS  
GAME ROOM UPSTAIRS  
LARGE DOUBLE GARAGE  
SEASONAL STORAGE CLOSET UPSTAIRS  
LARGE COVERED REAR PORCH

### *Available options to add:*

- OPTIONAL EXTENDED BEDROOM 2
- OPTIONAL THIRD CAR GARAGE; INCLUDING MEDIA AREA ABOVE TO BE FINISHED
- OPTIONAL BATH 4
- OPTIONAL HALF BATH AND PRIVATE BEDROOM 2

### *Included:*

- JAMES HARDIE® (NO ROT) SIDING WITH A 30 YR. MANUFACTURER LIMITED WARRANTY, EXTERIOR TRIM HAS A 15 YR. LIMITED WARRANTY; PER PLAN.
- PELLA® WINDOWS ARE LOW-MAINTENANCE VINYL FRAMED WINDOWS = NO MORE PAINTING. LOW-E ADVANCED GLASS & ARGON GAS IN ALL WINDOWS. SDL WINDOWS ON FRONT OF HOME & WINDOWS FACING STREET.
- AMANA® EQUIPMENT USED FOR HVAC, LTD. LIFETIME WARRANTY ON COMPRESSOR AND HEAT EXCHANGE WITH 10 YR. PARTS FOR THE ORIGINAL HOMEOWNER.
- 10 YEAR LIMITED WARRANTY BY QUALITY BUILDERS WARRANTY CORPORATION; BACKED BY LIBERTY MUTUAL®

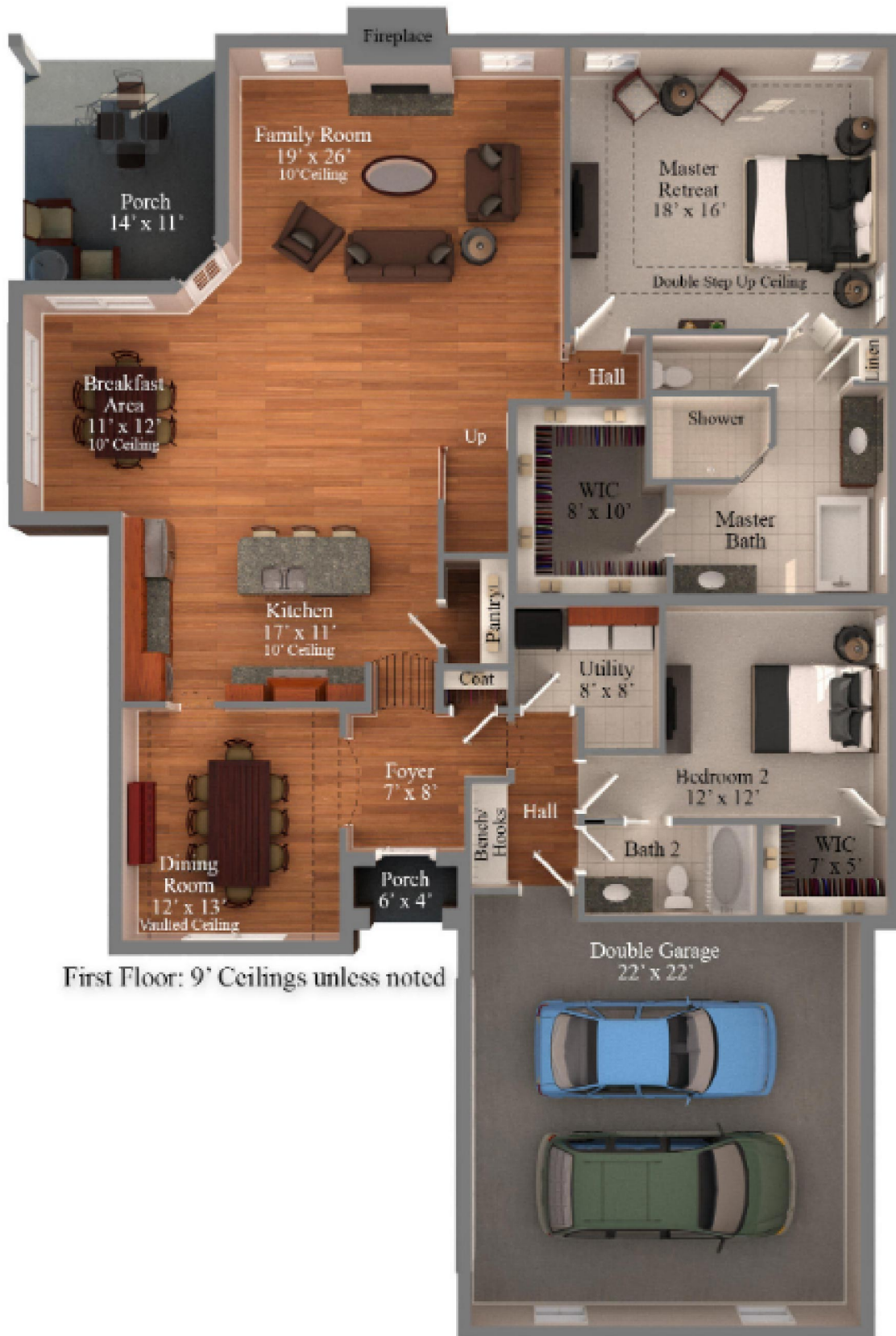




est. 1987  
**Magnolia**HOMES

VILLAGES OF SAUNDERS CREEK

# The Chateau Chablis plan



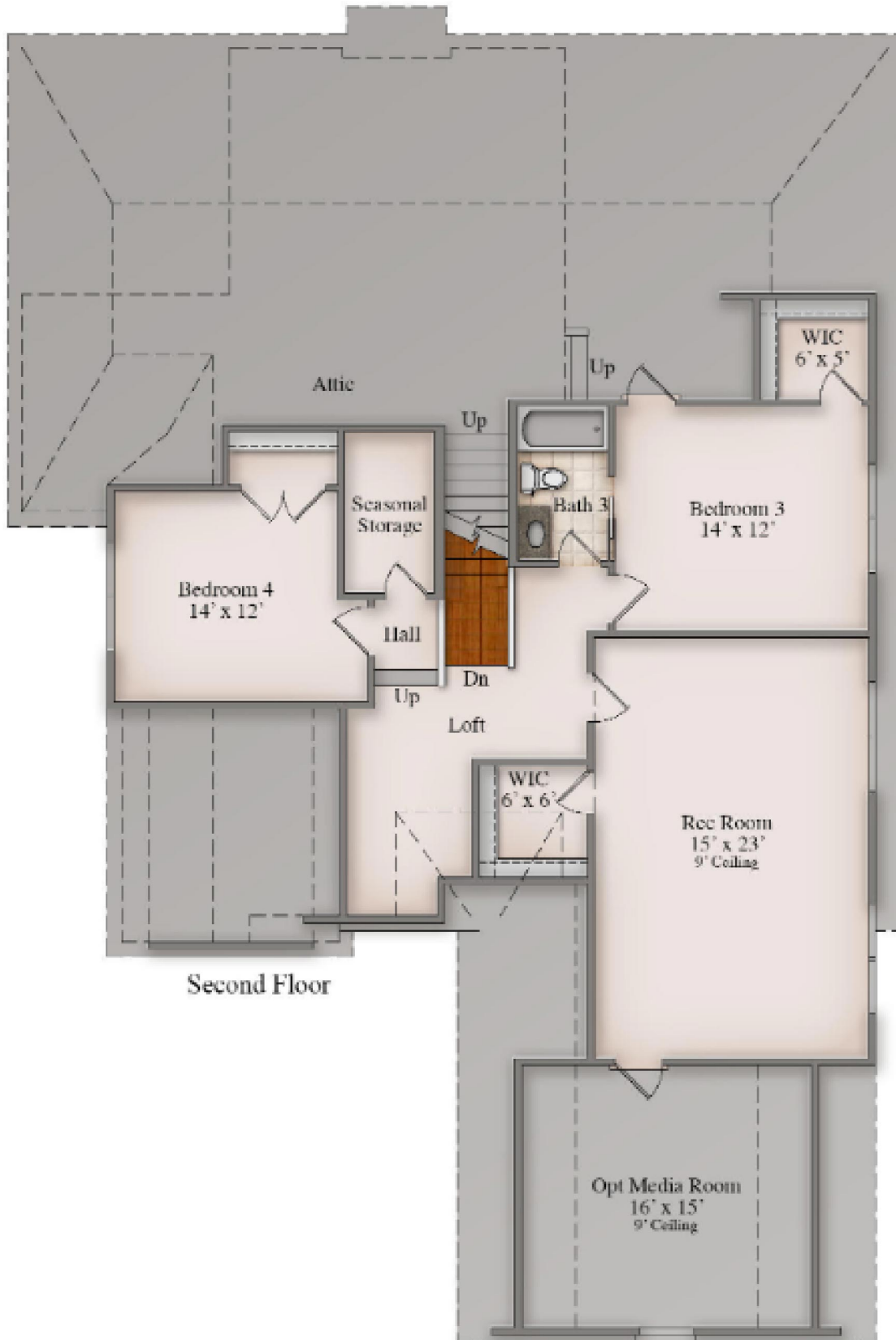
First Floor: 9' Ceilings unless noted



est. 1987  
**Magnolia**HOMES

VILLAGES OF SAUNDERS CREEK

# The Chateau Chablis plan

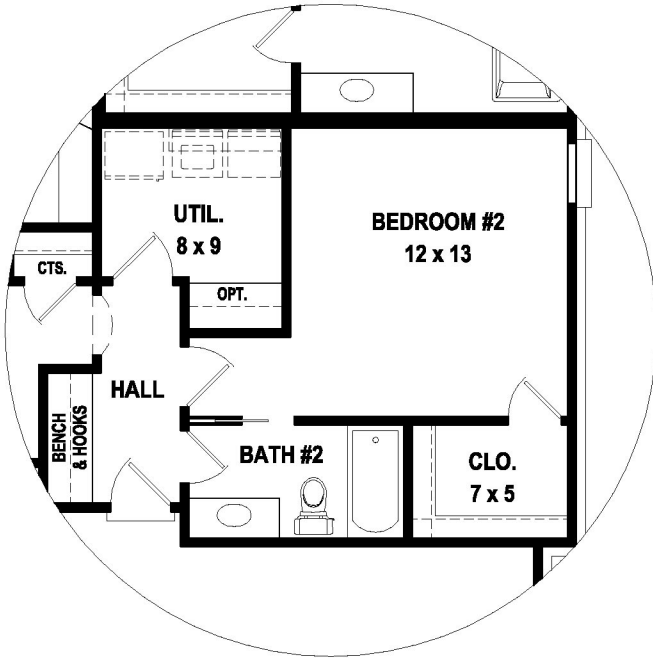




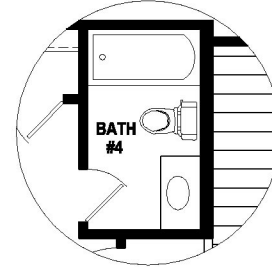
est. 1987  
**Magnolia**HOMES

VILLAGES OF SAUNDERS CREEK

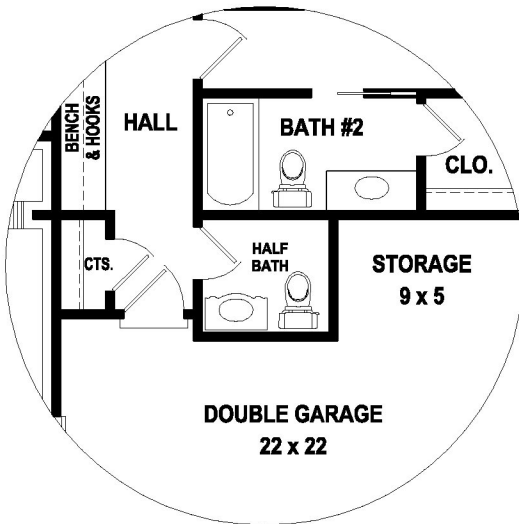
# The Chateau Chablis plan



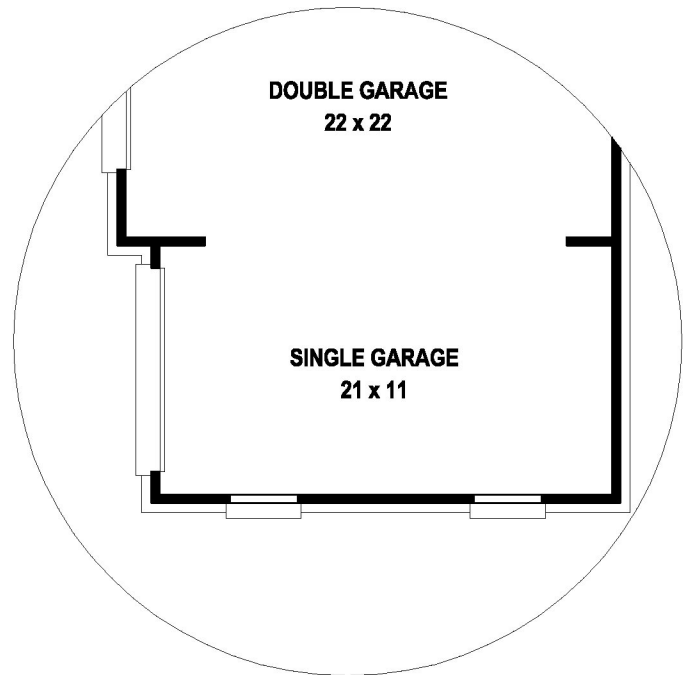
**"OPTIONAL"  
EXPANDED BEDROOM #2**



**"OPTIONAL"  
BATH #4**



**"OPTIONAL"  
HALF BATH &  
PRIVATE BEDROOM #2**



**"OPTIONAL"  
TRIPLE GARAGE**